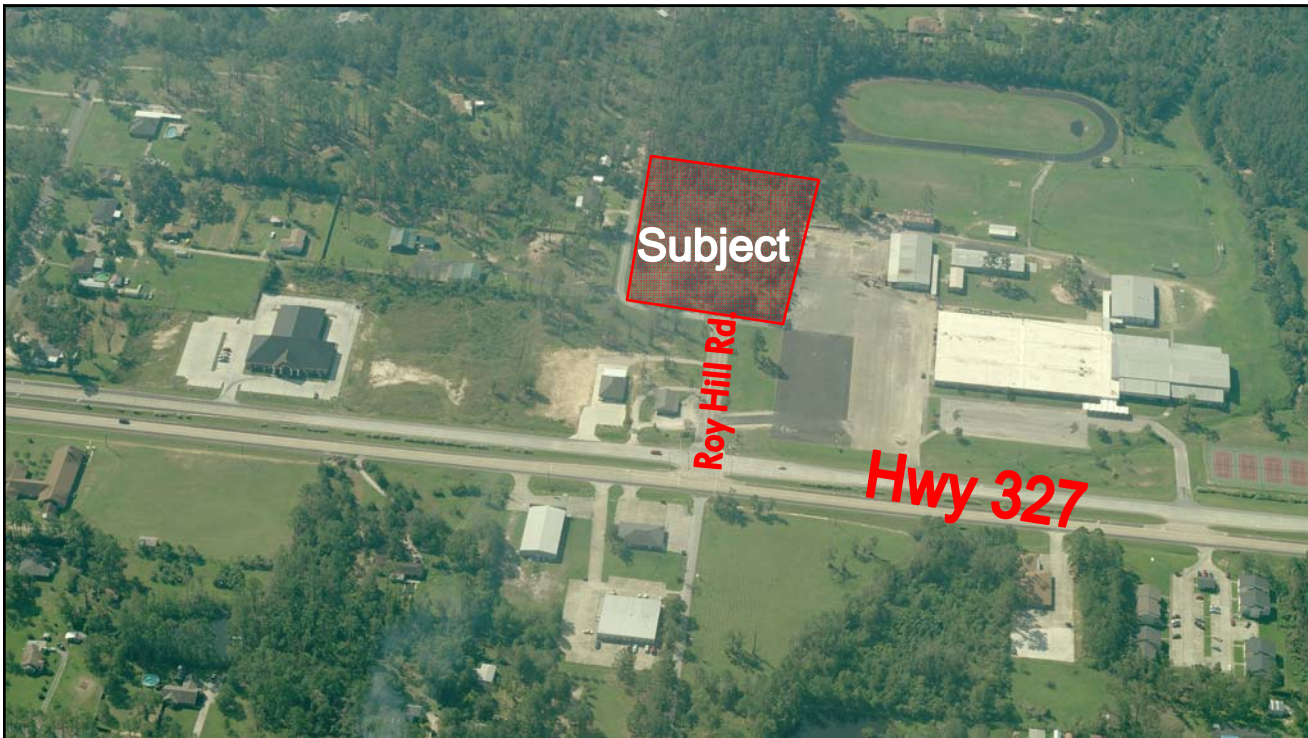
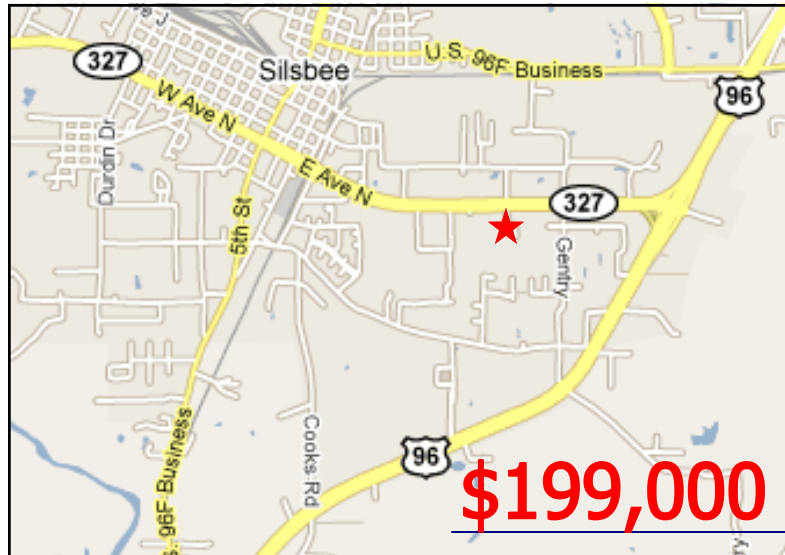


## 3.719 Acres Silsbee

### Property Information

- Rectangular Shaped Tract
- Just off Hwy 327
- Easy access to Hwy 96, Business 96, and Hwy 92
- Adjoins Silsbee Middle School
- Traffic Counts on Hwy 327 +/-6,000 - +/-15,000 VPD



**Ryan Harrington**  
**Charlie Foxworth SIOR CCIM**  
Email: [Ryan@Foxworthrealty.com](mailto:Ryan@Foxworthrealty.com)  
Email: [Charlie@Foxworthrealty.com](mailto:Charlie@Foxworthrealty.com)

**Office: (409) 892-7245**  
Fax: (409) 898-4108  
2580 N. 11th Street  
Beaumont, TX 77703